

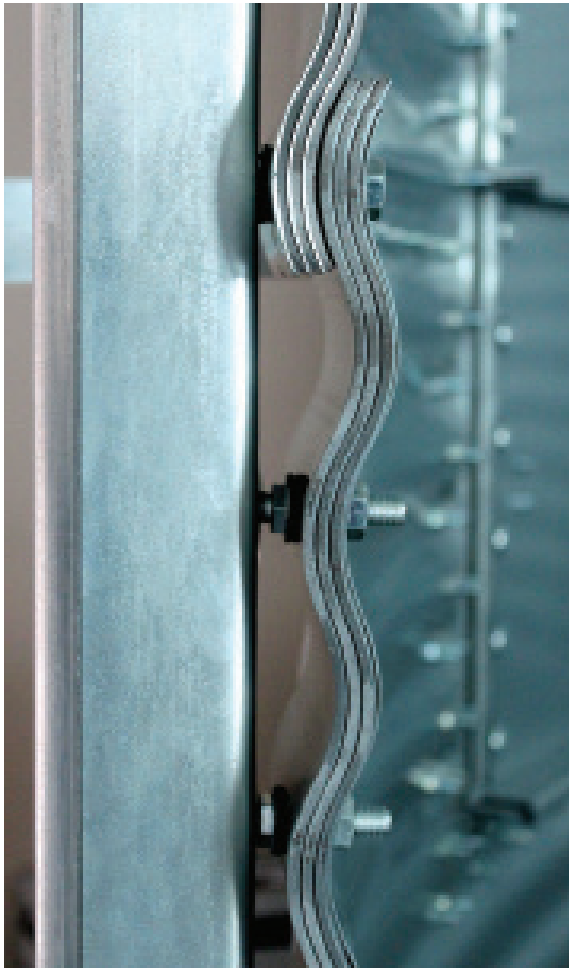


DOUBLE END STUD BOLT™

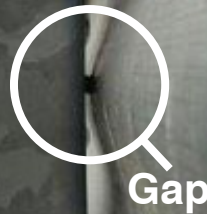
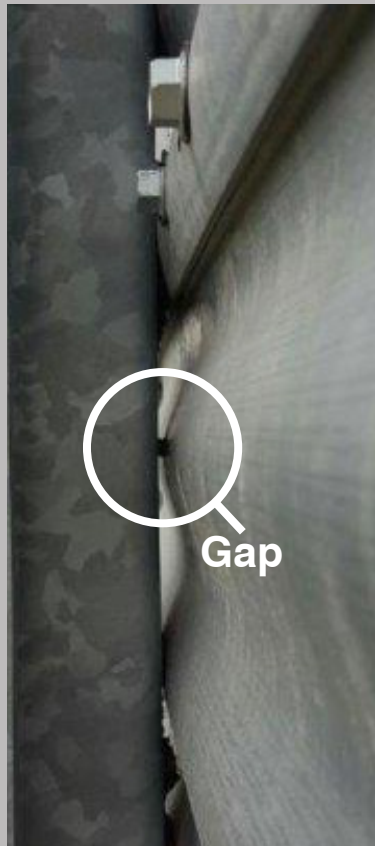
FOR BIN STIFFENERS

WHAT IT DOES

The Sukup Double End Stud Bolt™ is for use on laminated bin sheets and solves the potential problem of water weeping behind the stiffeners and into the bin causing spoiled grain. The patented design features a rubber-backed steel washer in the middle of the bolt that is set between the stiffener and sidewall sheets. This provides a tight seal directly to the outer sidewall sheet behind the stiffener, eliminating water infiltration between the sheets and into the grain.



Conventional



Gap

Sukup



Tight Seal



Sukup Manufacturing Co. ■ www.Sukup.com

Box 677 ■ 1555 255th Street ■ Sheffield, Iowa 50475-0677 ■ ph 641.892.4222 ■ fx 641.892.4629 ■ info@sukup.com

Distribution Centers

Cameron, MO 64429
7426 NE 352nd St.
ph 816.649.2226
missouri@sukup.com

Arcola, IL 61910
980 E. State Rte. 133
ph 217.268.3026
illinois@sukup.com

Defiance, OH 43512
7724 Rte. 66 N.
ph 419.784.9871
ohio@sukup.com

Jonesboro, AR 72403
204 Best Industrial Dr.
ph 870.932.7547
arkansas@sukup.com

Watertown, SD 57201
2701 Piper Ave.
ph 605.882.6697
southdakota@sukup.com

York, NE 68467
2311 N Division Ave
ph 402.694.5922
nebraska@sukup.com