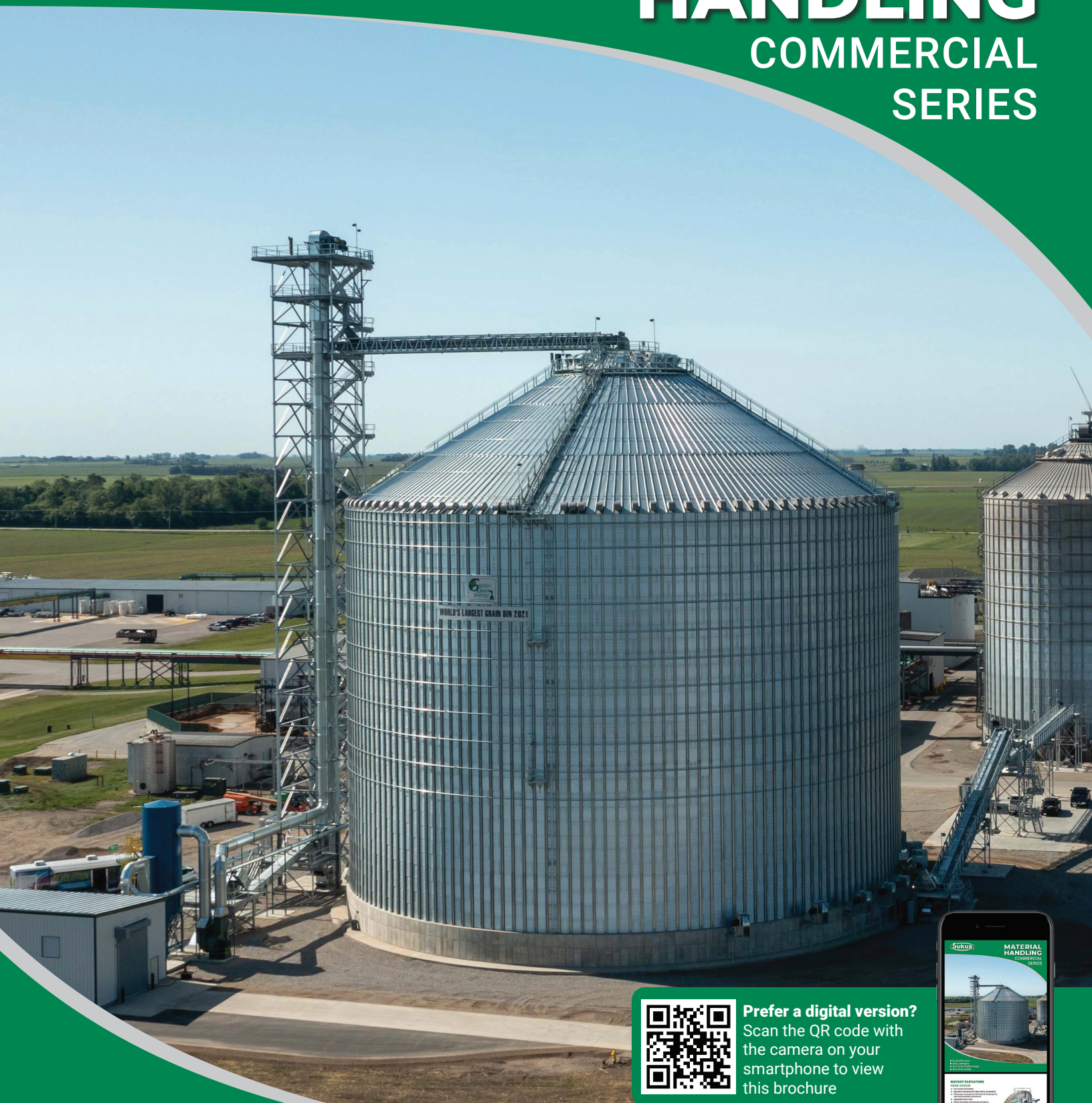




MATERIAL HANDLING

COMMERCIAL SERIES



Prefer a digital version?
Scan the QR code with the camera on your smartphone to view this brochure

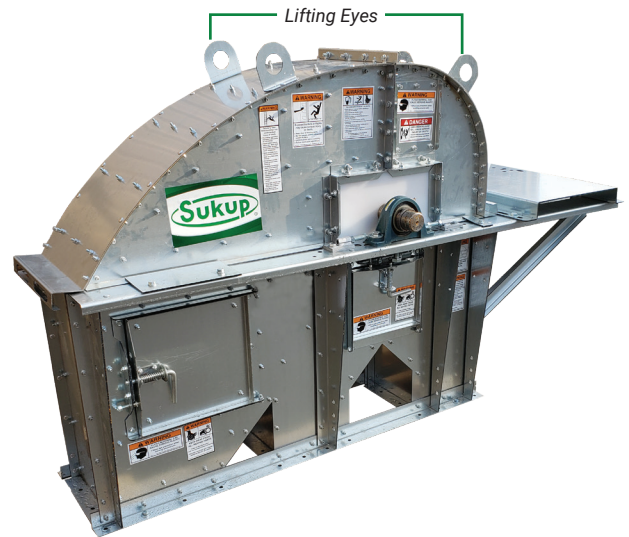


- Bucket Elevators
- Drag Conveyors
- Zero-Entry Paddle Sweep
- Zero-Entry Sweep

BUCKET ELEVATORS

HEAD DESIGN

- Low-impact head design
- Split-style hood allows for easy interior accessibility
- Lifting eyes are located on the hood of the elevator to ease hood assembly and removal
- Adjustable throat wiper
- Interior lip to keep moisture out and dust in
- Expanded metal-back urethane liners standard, others available
- Tapered bushing at pulley to eliminate lateral movement
- Externally mounted, heavy-duty pillow block roller bearings
- Bearing alignment bolts on each side of bearing for proper pulley positioning
- Turned, ground, and polish shaft



INTERMEDIATE

- Patented squaring plates and alignment pins are placed at the top and bottom of every section to align trunking and eliminate twisted trunk sections making assembly easier
- Robot, fixture welded trunking for consistent square and parallel construction
- Hinged inspection door can be placed in three positions on inspection section
- Ten foot inspection section facilitates belt and splice installation
- Heavy welded frame with large removable panels on inspection section
- Heavy-gauge, huck-bolted units
- Dust-tight and weather-tight protection

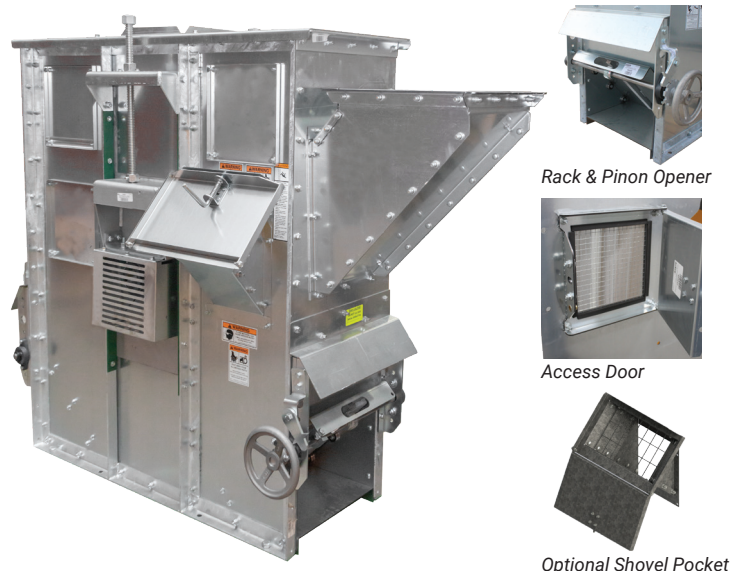


“ The assembly is easy and this is a durable product. Sukup bucket elevators have come a long way in the commercial market. They are so quiet you can't hear them run.

-Charlie Morris,
Buresh Building Systems
Hampton, Iowa

BOOT

- Large, easy, tool-free access doors with a unique spring latch
- Large, easy-access clean-out doors with rollers on each end rack & pinion
- Hat section at bottom of clean-out doors to minimize contact with concrete
- UHMW seals at shafts
- Heavy 1/4" structural frame with painted epoxy finish or hot-dipped galvanized option
- Corrosion-resistant Acme screw take-up
- Bolted construction for easy repair and replacement
- Drip guard/rain guard to prevent water running in bottom of boot



STANDARD FEATURES

BUCKETS

- We use high-density, non-sparking, polyethylene buckets
- Nylon, Urethane, and Steel buckets are optional when using highly abrasive materials
- No. 3 Vented buckets are standard; No. 4 venting optional



LOW IMPACT HEAD DESIGN

- The bucket elevator head is a controlled discharge design; Instead of the product bouncing off the interior of the head, it slides gently along the contour of the hood
- Product damage and back-legging are minimized and the need for an internal shroud is eliminated

CROWN-FACED BOOT PULLEY

- Standard with any bucket elevator

SLIDE-LAGGING HEAD PULLEY

- Replaceable slide-lagging is ideal for the feed and grain industry

TURNED, GROUND, AND POLISHED SHAFT

- Sukup® utilizes a 1045 TG&P shaft allowing your entire elevator to run smoothly

BELTING

- Static Conductive, Oil Resistant, and Fire Retardant (SOFR) rubber belting
- Rubber belting has higher bolt retention properties which result in higher maximum bucket projection ratings, and provides maximum oil-based dust suppression additives; An extra 10 feet of belting is supplied with every order to facilitate any belt-splicing configuration



BEARINGS

- Spherical roller bearings on all head assemblies
- Split Roller Bearings come standard on 57/16" and larger head shaft sizes; Other types available upon request



HEAVY GAUGE TRUNKING

- 12 or 10 gauge trunking units

OPTIONAL FEATURES

GRAVITY TAKE-UP

- Eases overall use of your bucket elevator
- Maintains proper belt tension, and reduces maintenance

PRESSURE RELIEF DOOR

- NFPA compliant pressure relief doors come standard on head section; This feature is optional on trunking



DISTRIBUTOR PLATFORM

- Available in sizes 4x8 ft. and 4x10 ft.

STANDARD AND FLARED INLET HOPPERS

- Available with 10-gauge abrasion-resistant (AR) or ceramic lining
- Additional magnet door



Standard Inlet

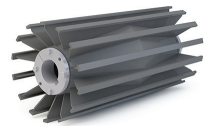
HEAD SERVICE PLATFORM

- One of the largest in the industry! Increases safety because there is more room to work
- Available in 3 different sizes
- Head platforms come pre-assembled from factory



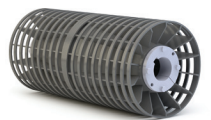
WINGED BOOT PULLEY

- Great option for concern about material collecting on the pulley face



SPIRAL WINGED BOOT PULLEY

- Increased pulley-to-belt contact over winged pulley
- Eliminates noise caused by winged pulleys



HERRINGBONE WING BOOT PULLEY

- Wing angles of up to 45°
- Uses the pulley's rotation to eject material out the sides of the pulley



ALSO AVAILABLE

- Valving
- Distributors
- Guy Brackets
- Motion Sensors
- Reducer Backstops
- 45° Inlet hopper
- Bearing and Surface Sensors
- Belt Misalignment Sensors
- Ladder & Cage Assembly
- 360° Head platform
- Fall arrest ladder systems*
*Compliant with OSHA standard 1910.28.

DRAG CONVEYORS

GENERAL SPECIFICATIONS

14" AND 18"

- 81XHH (2.609" pitch) chain standard

22" AND 26"

- WH124 (4.00" pitch) chain standard
- Upgradeable to WH124HD (4.063" pitch)

30" AND 34"

- WH132 (6.050" pitch) chain standard
- Upgradeable to WH150XHD (6.050" pitch)

DODGE BEARINGS

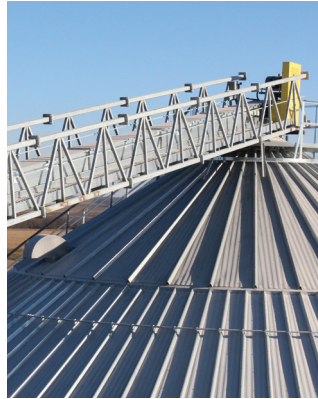
- Head - S2000, Imperial ISAF or TAF or EXL, SAF-XT (Imperial IP option up to 4¹⁵/₁₆")
- Other bearing options upon request

TARGET CHAIN SPEED

- 150 FPM

HOT-DIPPED GALVANIZED

- Head, tail and trough sections



HEAD SPECIFICATIONS

SIDES

- Up to $\frac{1}{4}$ " complete with welded bearing mount

BEARING

- Mounts horizontally
- Spherical roller bearings standard

SPROCKETS

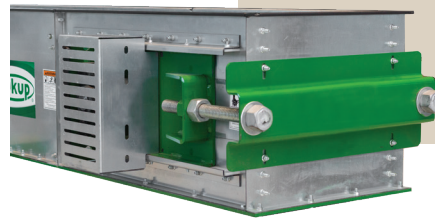
- Split design
- Chain pitch 6" or greater use hunting (skip) tooth sprockets standard

SHAFT, BEARING, AND SPROCKET

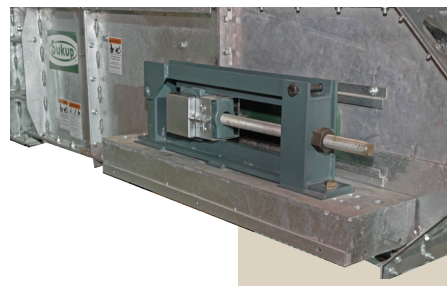
- Easily removed as an assembly



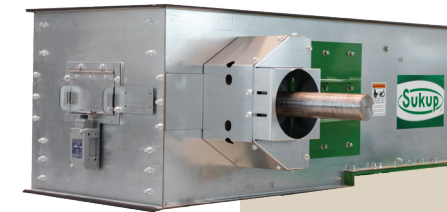
Fully welded hot-dipped galvanized



Formed galvanized construction



Fully welded hot-dipped galvanized



Formed galvanized construction

TAIL SPECIFICATIONS

SIDES

- Up to $\frac{3}{16}$ " welded

TAKE-UP ASSEMBLY

- Utilizes a center or top pull, wide-slot bearing design

TAIL SHAFT

- Drilled and tapped for speed switch ($\frac{1}{2}$ - 13UNC)

SPROCKETS

- Split design
- Sprocket styles and shielding same as head

TROUGH SPECIFICATIONS

BODY SECTIONS

- 3-piece design with a removable bottom

SIDES

- Up to 26" tall are 10 gauge galvanized; Taller sizes are 7 gauge
- Both have $\frac{1}{4}$ " welded flanges

BOTTOMS

- Available in $\frac{3}{16}$ ", $\frac{1}{4}$ ", or $\frac{3}{8}$ " AR200 or AR450

SIDE LINERS

- Available in 10 gauge, $\frac{3}{16}$ ", or $\frac{1}{4}$ " AR200 or AR450

REPLACEABLE RAIL RETURNS

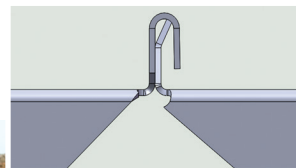
- Equipped with standard 10 gauge AR cap
- Optional $\frac{3}{16}$ ", or $\frac{1}{4}$ " AR200 or AR450

HOT-DIPPED GALVANIZED

- Bottoms, slides and covers

PATENTED HIP STYLE BOLTED CONVEYOR COVERS

- Provides a weather-tight seal that leaves no area for water to leak into the conveyor



Hip Style Bolted
Conveyor Covers
Patent No. 8,047,358



ZERO-ENTRY COMMERCIAL PADDLE SWEEP

5K COMMERCIAL PADDLE SWEEP



Patent Pending

Available in bins with full aeration floors or flush floors



**HEAVY-DUTY STEEL
PIVOT WHEELS**



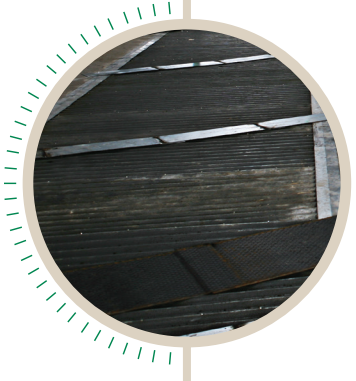
PIVOT POINT



Pivot Point
Patent No. 9,327,921



A-SHAPED SHIELD



**INDUSTRIAL GRADE
WEAR TRACK**

ZERO-ENTRY COMMERCIAL PADDLE SWEEP

10K COMMERCIAL PADDLE SWEEP

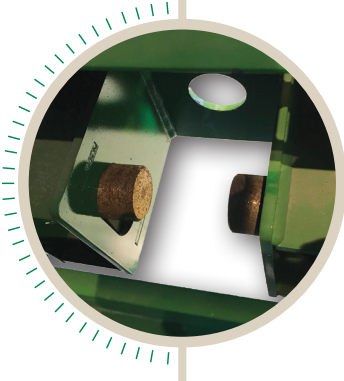
Available in bins with flush floors only



10K Commercial
Paddle Sweep
Patent No. 10,377,573



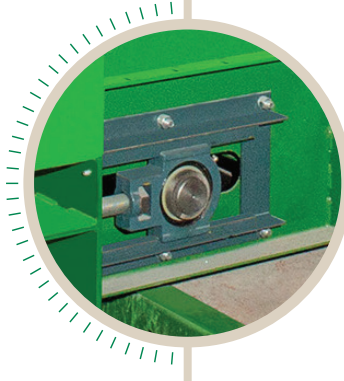
Serrated Paddle
Patent No. 10,836,582



PIVOT POINT



Pivot Point
Patent No. 9,327,921



**HEAVY DUTY TAKE-UP
BEARINGS** supply long lasting
durability and strength.



A-SHAPED SHIELD

ZERO-ENTRY COMMERCIAL PADDLE SWEEP

Available in 5K and 10K

PRODUCT FEATURES

PIVOT POINT (PATENT NO. 9,327,921)

- Allows the sweep to “free-float” to account for variations in concrete

A-SHAPED SHIELD

- Designed to better distribute load from grain

CENTER SUMP

- Center sump plug switch
- **10K SWEEP** - cast in place and large 45" x 45" opening allows for maximum grain flow; Discharge is available in 16", 24", and 32" squares
- **5K SWEEP** - available to fit over a 16" or 21" wide Sukup Drag Conveyor or a cast in place option with a 16" or 24" square discharge

INDUSTRIAL GRADE WEAR TRACK

- Protects aeration tunnels



HEAVY-DUTY STEEL PIVOT WHEELS

- Bronze bushings



EXPLOSION-PROOF MOTORS

- Industrial Grade Gear Box and bearings for greater safety and durability

CONTROL BOX FEATURES

- VFD's supplied for all sweep motors
- Ability to interlock other equipment to the sweep controls

EMERGENCY STOP BUTTON

- Enhances safety

PROGRAMMABLE LOGIC CONTROLLER (PLC)

- Provides greater reliability

ZERO-ENTRY AUTOMATIC TOUCH SCREEN CONTROLS

- Allows the pushers' start and stop points to be user programmed on the touch screen to keep the paddles running efficiently based on a particular situation

ADJUSTABLE WALL SCRAPER

- Reduces amount of grain left between sweep and bin wall

HEAVY-DUTY ZERO-ENTRY EXPLOSION PROOF ROTATING CONTACT

- Provides power to the sweep
- No need to enter the bin

ADJUSTABLE RUBBER-TIPPED SCRAPER

- Behind the auger/paddles that maximizes the amount of grain collected along the bin floor

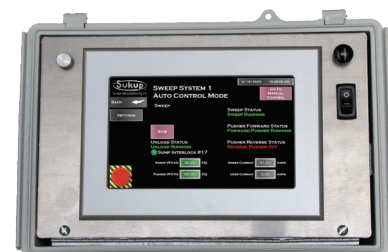
INDUSTRIAL GRADE PUSHERS

- Equipped with explosion-proof motors and foam-filled tires for safety and durability
- Pusher speed is based upon their location on the auger through the use of varying gear ratios; This results in the pushers applying uniform pressure to the sweep, reducing wear on the inside pushers



HEAVY-DUTY FRAME

- Designed to provide optimal strength to withstand the intense pressure of deep grain depths



HY-FLIGHT CONVEYORS

GENERAL SPECIFICATIONS

- Capacity range up to 40,000 BPH
- Easily replaceable bottom along with sideliner packages extend equipment lifespan
- Patented cover design keeps dust in and water out (Patent #8,047,358)
- Adjustable bypass hopper
- Bearing, sprocket and shaft can be removed as one assembly
- Externally-mounted, heavy-duty pillow block bearings on head and tail
- Turned, ground and polished shaft
- 1/2" UHMW paddles eliminate steel-to-steel contact
- Corrosion-resistant Acme thread take-up screws at tail
- Hot-dipped galvanized construction
- 1/4" divider pan
- Single piece bend section in 5° increments



PRODUCT SPECIFICATIONS

- Curve sections are all single piece
- Curve sections available in 5° increments from 10° to 50°
- By-pass drive-over hoppers have an adjustable shroud to control flow and are available in 6', 8', and 10' lengths
- Longer by-pass hoppers on request; Low-profile, and wide by-pass hoppers available
- Grating available on standard by-pass hoppers only
- By-pass inlet hoppers are available in 3' and 4' lengths
- Body section liners available in 10 gauge, 3/16", or 1/4" AR200 or AR450; Heavier liners and bottoms available upon request
- By-pass hopper liners available in 10 gauge, 3/16", or 1/4" AR or ceramic

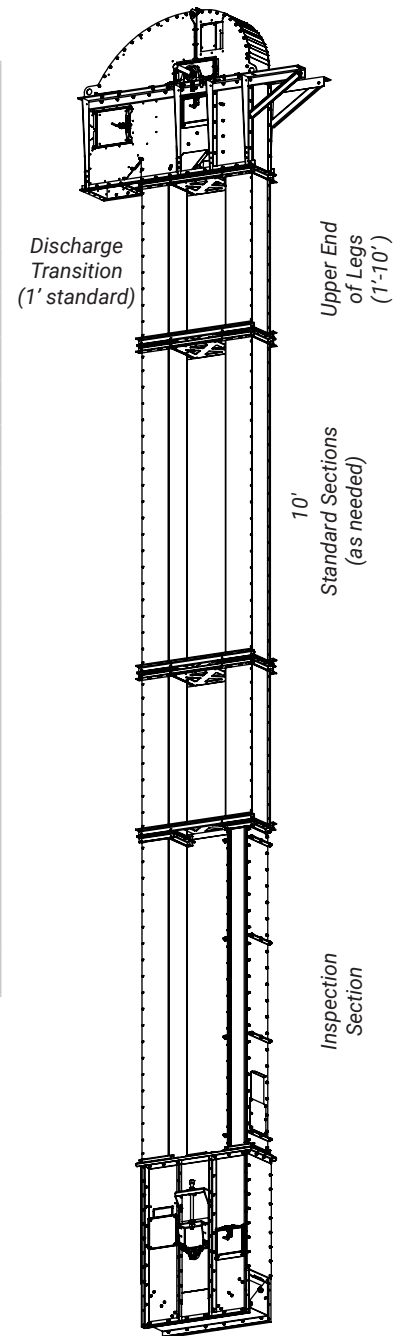


SPECIFICATIONS

BUCKET ELEVATORS

PULLEY DIAMETER	BPH	BUCKET		PULLEY RPM	BELT SPEED (FPM)	LEG CASING
		SIZE	SPACING			
42	10,000	14x8	10	57	627	22x14
48	10,000	14x8	11	56	704	22x14
42	12,000	16x8	9.75	57	627	22x14
48	12,000	16x8	11	56	704	22x14
42	15,000	18x8 LP	8.5	57	627	27x14
48	15,000	18x8	10	56	704	27x14
42	20,000	(2) 14x8	10	57	627	36x14
48	20,000	(2) 14x8	11	56	704	36x14
42	25,000	(2) 16x8	9.5	57	627	40x14
48	25,000	(2) 16x8	10.5	55	691	40x14
42	30,000	(2) 18x8 LP	8.5	57	627	44x14
48	30,000	(2) 18x8	10	56	704	44x14
42	35,000	(2) 18x8 LP	7.25	57	627	44x14
48	35,000	(2) 20x8	9.5	56	704	49x14
42	40,000	(2) 20x8 LP	7.5	57	627	49x14
48	40,000	(2) 20x8 LP	8.25	56	704	49x14
42	45,000	(2) 22x8 LP	7	57	627	53x14
48	45,000	(2) 22x8 LP	7.75	56	704	53x14
48	50,000	(2) 20x10 LP	9.75	52	654	53x16

Above specifications based on maximum cup fill and optimum belt speed.
Other configurations available.



DRAG CONVEYORS

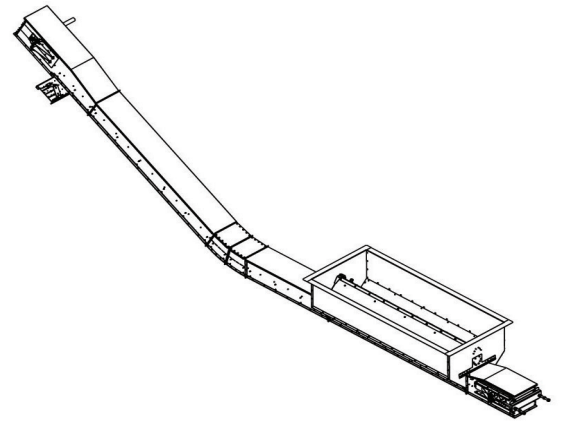
MODEL NO.	CAPACITIES BPH			
	100 FPM	125 FPM	150 FPM	175 FPM
1214	3,432	4,290	5,148	6,005
2014	5,556	6,946	8,335	9,724
1618	6,724	8,406	10,087	11,768
2018	8,185	10,231	12,277	14,323
2022	10,280	12,849	15,419	17,989
2622	13,423	16,779	20,135	23,491
2626	16,855	21,069	25,283	29,497
3226	20,803	26,003	31,204	36,405
3230	24,333	30,416	36,499	42,582
3630	27,411	34,264	41,116	47,969
3434	30,375	37,969	45,563	53,157
3834	33,989	42,486	50,984	59,481
4434	39,410	49,262	59,115	68,967

NOTE: Capacities based on clean, dry, whole #2 corn.



HY-FLIGHT CONVEYORS

TOP CHAIN SPEED				
MODEL NO.	100	125	150	175
HF2026	6,397	7,996	9,595	11,195
HF2630	9,734	12,168	14,601	17,035
FH3034	12,855	16,069	19,283	22,496
HF3438	16,409	20,511	24,613	28,715
HF3642	19,313	24,142	28,970	33,798
HF3845	21,924	27,405	32,886	38,368
HF4445	25,412	31,765	38,118	44,471



NOTE: Capacities based on clean, dry, whole #2 corn.

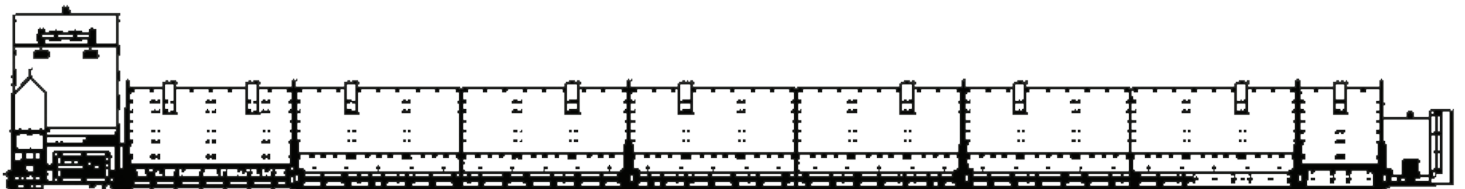
ZERO-ENTRY COMMERCIAL PADDLE SWEEP

10K COMMERCIAL PADDLE SWEEP

BIN DIAMETER	HP REQ.	PUSHERS	NO. OF SECTIONS
60'	10	1	3
72'	15	1	3
75'	15	2	3
78'	20	2	4
90'	20	2	4
105'	25	2	5
135'	30	3	6
156'	40	3	7

5K COMMERCIAL PADDLE SWEEP

BIN DIAMETER	HP REQ.	PUSHERS	NO. OF SECTIONS
36'	5	1	2
42'	5	1	2
48'	7.5	1	3
54'	7.5	1	3
60'	7.5	1	3
72'	10	1	4
75'	10	1	4
78'	10	1	4
90'	15	2	5
105'	15	3	6



10K Commercial Paddle Sweep

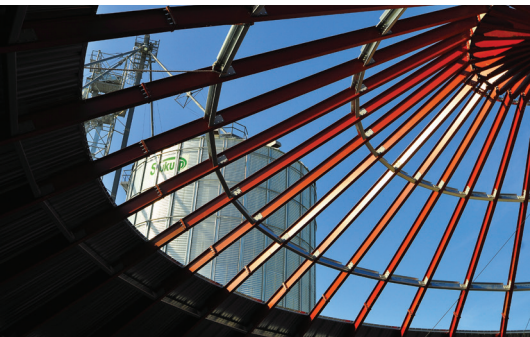


5K Commercial Paddle Sweep

DRYING, STORAGE and HANDLING SOLUTIONS®



We've spent more than 55 years developing innovative, efficient, and reliable products to meet the ever-expanding needs of grain producers. With a full-line of product Solutions®, Sukup has all your grain handling, storage, drying, and steel building needs.



Sukup Manufacturing Co. ■ www.sukup.com

Box 677 ■ 1555 255th Street ■ Sheffield, Iowa 50475-0677 ■ ph 641.892.4222 ■ fx 641.892.4629 ■ info@sukup.com

Distribution Centers	Cameron, MO 64429 7426 NE 352 nd St. ph 816.649.2226 missouri@sukup.com	Arcola, IL 61910 980 E. State Rte. 133 ph 217.268.3026 illinois@sukup.com	Aurora, NE 68818 1705 Hwy. 34 E. ph 402.694.5922 nebraska@sukup.com	Defiance, OH 43512 7724 Rte. 66 N. ph 419.784.9871 ohio@sukup.com	Jonesboro, AR 72403 204 Best Industrial Dr. ph 870.932.7547 arkansas@sukup.com	Watertown, SD 57201 2701 Piper Ave. ph 605.882.6697 southdakota@sukup.com
-----------------------------	---	--	--	--	---	---